

Manufactured Stone and Thin Brick Installation Systems

- A Variety of System Options, Including for High-Performance, Efflorescence-Free and Fast-Setting Systems
- Best-Backed System Warranty • Technical Support Available





Manufactured Stone Installation Systems

MAPEI offers the best and complete systems of installation products for a large variety of manufactured stones. For interior or exterior walls in residential or commercial building, MAPEI has a solution for it all.

TCNA Installation Methods W201, W202 and W244 require the use of a waterproofing membrane between the masonry or concrete substrate and the bond coat used for setting the tiles. MAPEI's *Mapelastic™ AquaDefense* premium waterproofing and crack-isolation membrane can easily be applied with a roller or brush on flat or curved surfaces, providing a continuous protective barrier without the need for reinforcing mesh.

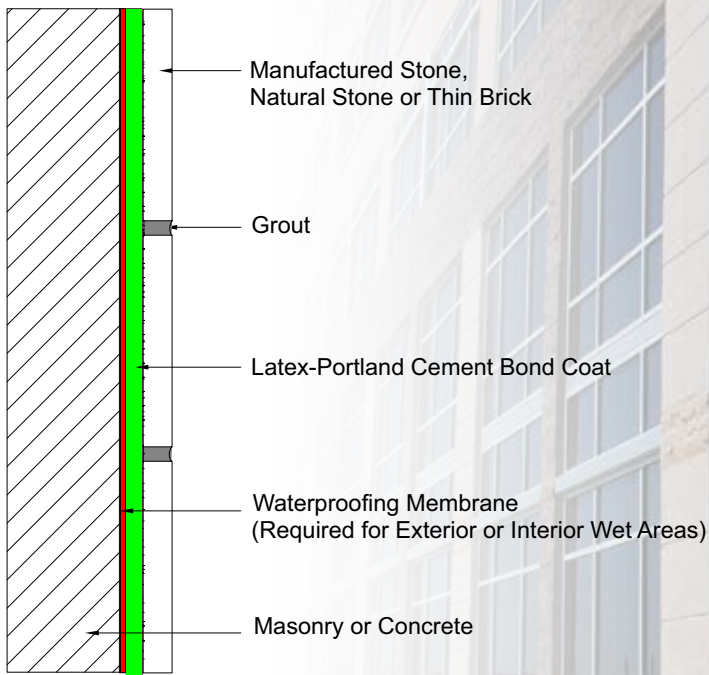
Because of its natural characteristics, stone may undergo quite a bit of expansion and contraction and requires an extremely flexible mortar. The *Granirapid®* mortar system is the ideal bonding coat to use for this type of installation. Built with HCT™ (High-Hydrated Cement Technology), *Granirapid* cures rapidly and, because of its special cement blend, does not draw salts to the surface that could result in efflorescence. MAPEI's *Ultracolor® Plus* grout uses the same technology, so the entire installation will be efflorescence-free, reflecting the beauty of the stone and the skill of the craftsmen.

The superior value of all the MAPEI products used in an installation are brought together with a premium system warranty, allowing you to give your customers your best!





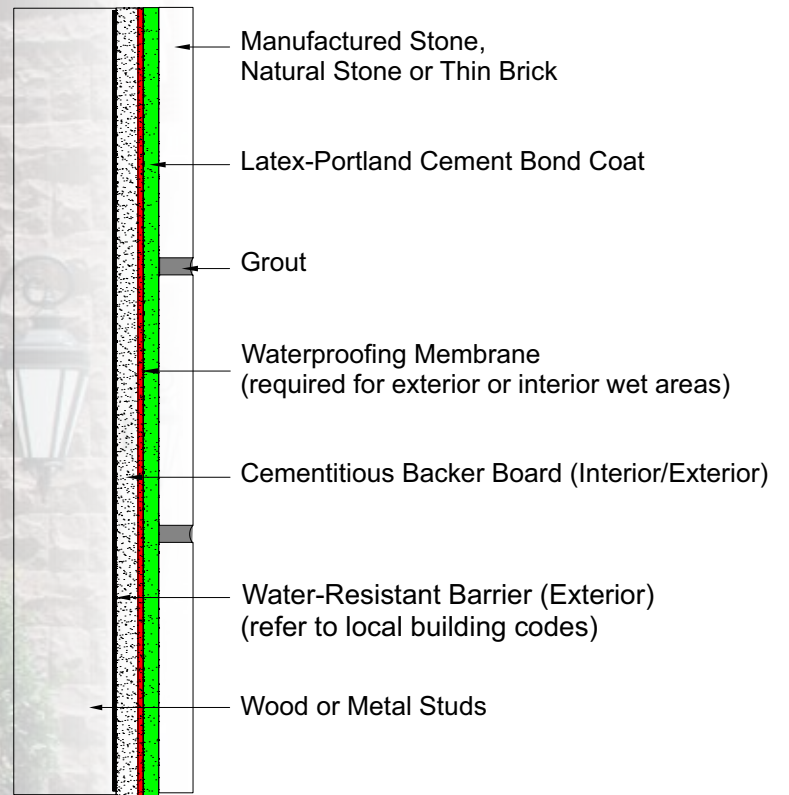
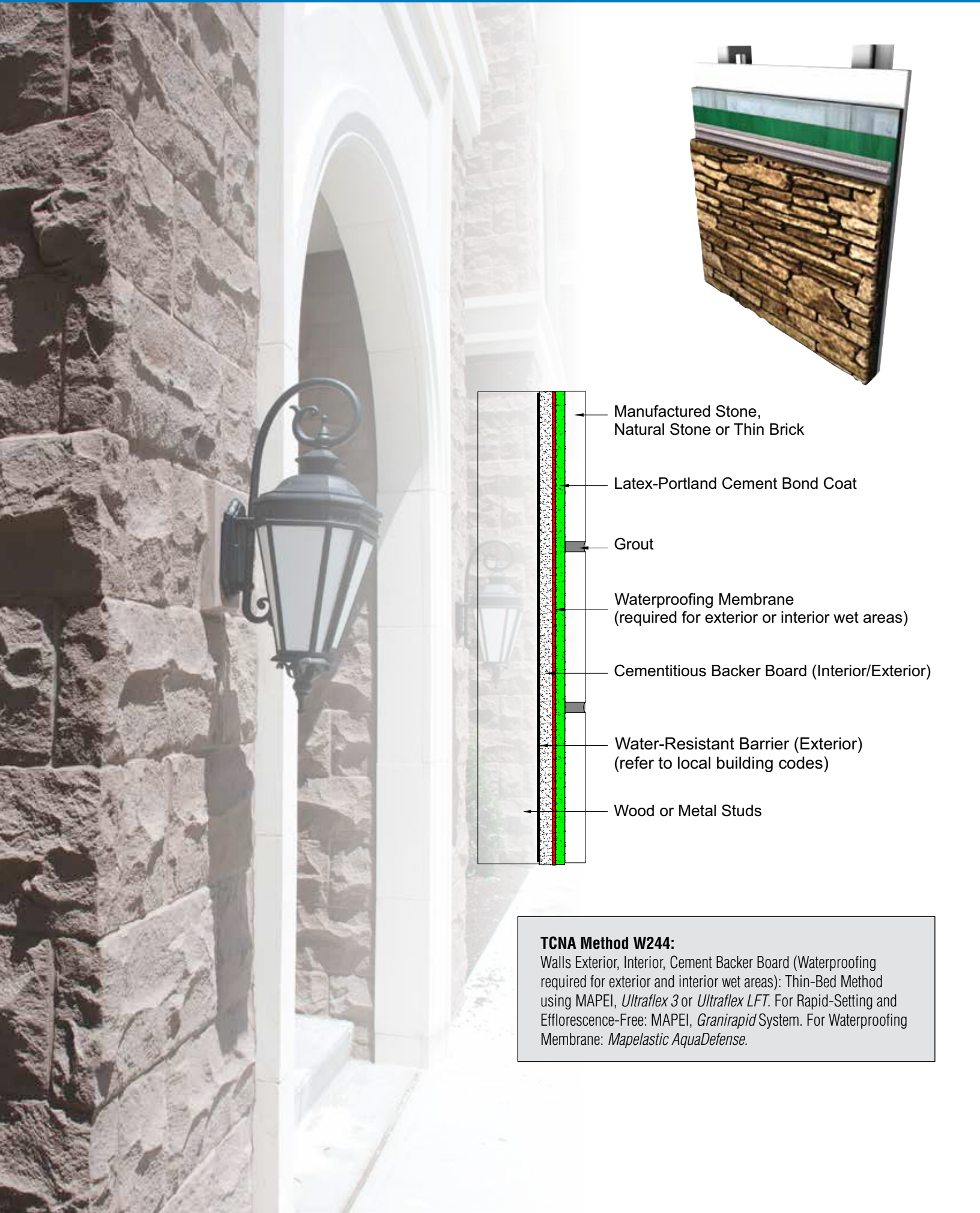
The following recommendations cover the installation of **Manufactured Stone and Thin Brick** for **interior and exterior** applications.



TCNA Method W202:

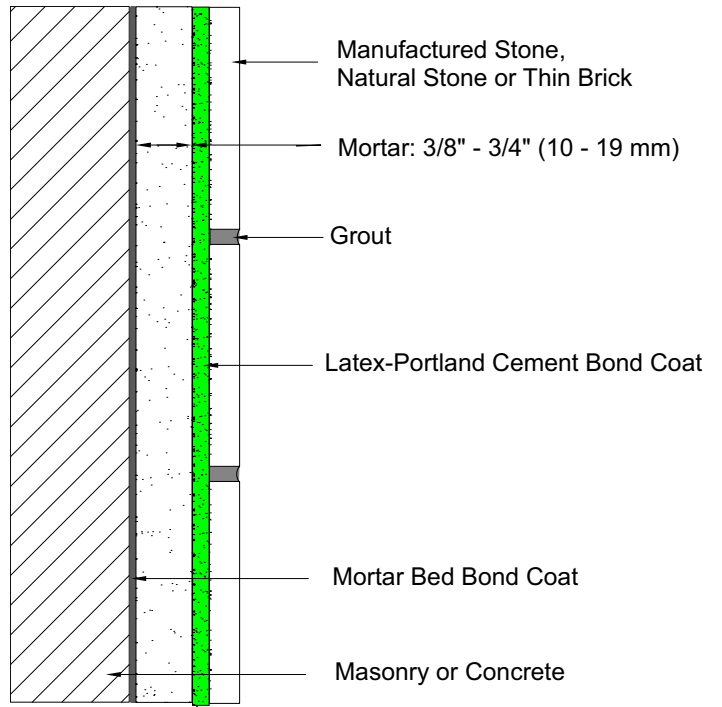
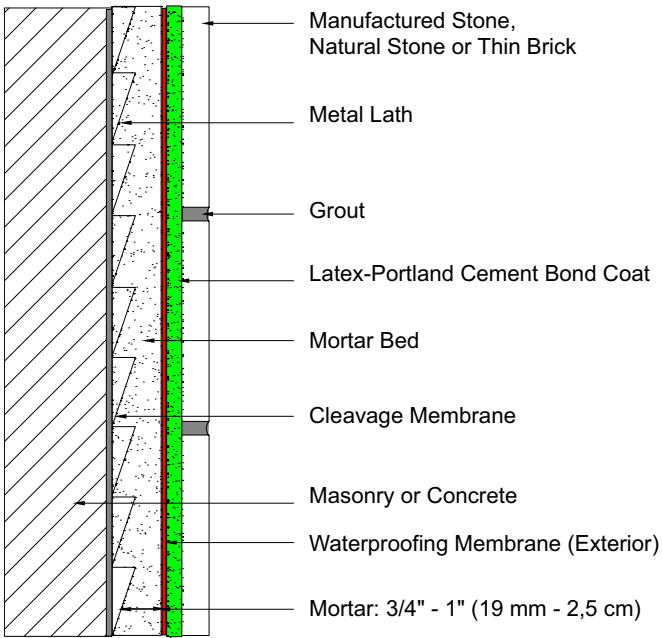
Latex-Portland Cement Mortar over Masonry Thin-Bed Method using MAPEI, *Ultraflex™ 3* or *Ultraflex LFT*. For Rapid-Setting and Efflorescence-Free: MAPEI, *Granirapid* System. For Waterproofing Membrane: *Mapelastic AquaDefense*.





TCNA Method W244:

Walls Exterior, Interior, Cement Backer Board (Waterproofing required for exterior and interior wet areas): Thin-Bed Method using MAPEI, *Ultraflex 3* or *Ultraflex LFT*. For Rapid-Setting and Efflorescence-Free: MAPEI, *Granirapid* System. For Waterproofing Membrane: *Mapelastic AquaDefense*.



TCNA Method W201:

Walls, Exterior and Interior, over Masonry, Cement Mortar Mortar Bed: MAPEI, 3:1 blended with *Planicrete*® AC (or jobsite mix). For Thin-Set installation, use MAPEI, *Ultraflex 3* or *Ultraflex LFT* as Bond Coat. For Rapid-Setting and Efflorescence-Free: MAPEI, *Granirapid* System. For Waterproofing Membrane: *Mapelastix AquaDefense*.

TCNA Method W211:

Walls, Mortar Bed: MAPEI, 3:1 mix blended with *Planicrete* AC (or jobsite mix). For Thin-Set installation, use MAPEI, *Ultraflex 3* or *Ultraflex LFT* as Bond Coat. For Rapid-Setting and Efflorescence-Free: MAPEI, *Granirapid* System.



Installation Materials

Surface Preparation

Provide for dry, heated storage on site and deliver materials at least 24 hours before installation begins. Please ensure that the substrate is structurally sound, clean and dry. Prior to installation, the surface should be protected and free of any potential substance or debris that may reduce or prevent adhesion. Please refer to MAPEI Technical Data Sheets concerning surface preparation and installation requirements.

Mortar and Grout Installation Instructions

1. Please refer to most current written instructions for each individual MAPEI product. Installation instructions are available on packaging and at www.mapei.com.
2. Grouting by Bag Method is recommended, taking care to avoid getting grout on the surface. Do not mix more grout than can be used in 20-25 minutes.

Grout Options:

- Interior/Exterior Fast-Setting and Efflorescence-Free: MAPEI, *Ultracolor Plus*. Sanded joints from 1/6" to 1" (1,5 mm to 2,5 cm).

Waterproofing Membrane

- Interior/Exterior, MAPEI, *Mapelastic AquaDefense*.

Protection

For at least 21 days after completion, protect finished manufactured stone or thin brick from freezing and do not immerse in water. Because temperature and humidity (during and after the installation of stone) affect the final curing time, allow for extended periods of cure and protection when temperatures drop below 60°F (16°C) and/or when the relative humidity is higher than 70%.

Warranty

MAPEI's Best-BackedSM Warranty Program has been carefully designed to give optimum warranty coverage for each MAPEI product and for product groups used as systems. The program covers all MAPEI product lines.

The industry's best products are the "Best Backed"

In all of the market segments it serves, MAPEI produces the industry's most innovative, highest-quality products. Through considerable investment in research and development, MAPEI focuses on fast-track construction projects, reducing installation costs and maximizing product performance, while keeping its environmental commitment at the forefront.

Through more than 75 years of technological leadership and state-of-the-art production techniques, MAPEI has developed a rock-solid reputation and earned the trust of customers. MAPEI reinforces that dependability with the Best-Backed warranty program in the industry.

Why are MAPEI warranties the best-backed in the business?

- ✓ Written in simple language
- ✓ Easy to qualify
- ✓ Easy-to-understand requirements
- ✓ Best warranty terms in the industry
- ✓ Cover the most comprehensive group of products in the industry:
 - Tile & Stone Installation Systems
 - Floor Covering Installation Systems
 - Concrete Restoration Systems
- ✓ Complemented by easy-to-access details at www.mapei.com

This reference guide was designed for information purposes only. For additional information and to access product data sheets, warranties and technical services, please contact **MAPEI Technical Services at 1-800-992-6273** (USA and Puerto Rico) or **1-800-361-9309 (Canada)**, or visit www.mapei.com.



MAPEI Headquarters of the Americas

1144 East Newport Center Drive
Deerfield Beach, Florida 33442
Teléfono: 1-888-US-MAPEI
(1-888-876-2734)

Technical Services

1-800-992-6273 (U.S. and Puerto Rico)
1-800-361-9309 (Canada)

Customer Service

1-800-42-MAPEI (1-800-426-2734)

Services in Mexico

0-1-800-MX-MAPEI (0-1-800-696-2734)

For the most current BEST-BACKEDSM product data and warranty information, visit www.mapei.com.

Edition Date: May 8, 2013

Copyright ©2013 by MAPEI Corporation ("MAPEI") and all rights are reserved. MAPEI does not guarantee or warrant the accuracy or completeness of this document. Nor does MAPEI assume any responsibility arising from the reader's reliance on the information in this document. MAPEI denies all liability for damages of any kind arising from any errors, omissions or inaccuracies in this document, or resulting from any reader's reliance on this document. Therefore, MAPEI disclaims all express and implied warranties, including, but not limited to the implied warranties of MERCHANTABILITY and FITNESS FOR A PARTICULAR PURPOSE. All intellectual property rights and other information contained in this document are the exclusive property of MAPEI (or its parent or related companies), unless otherwise noted. No part of this document may be reproduced or transmitted in any form without the prior written consent of MAPEI.



www.mapei.com

MAPEI[®]

ADHESIVES • SEALANTS • CHEMICAL PRODUCTS FOR BUILDING