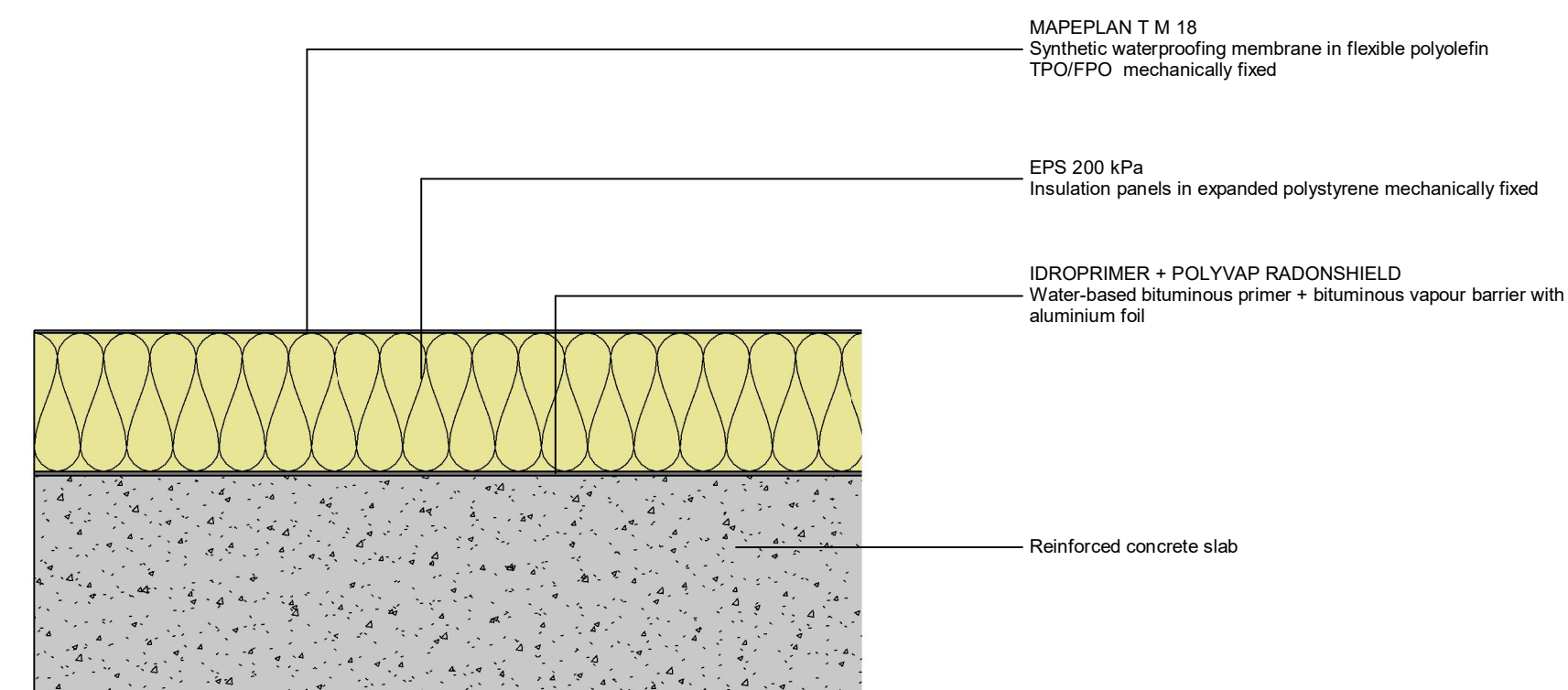
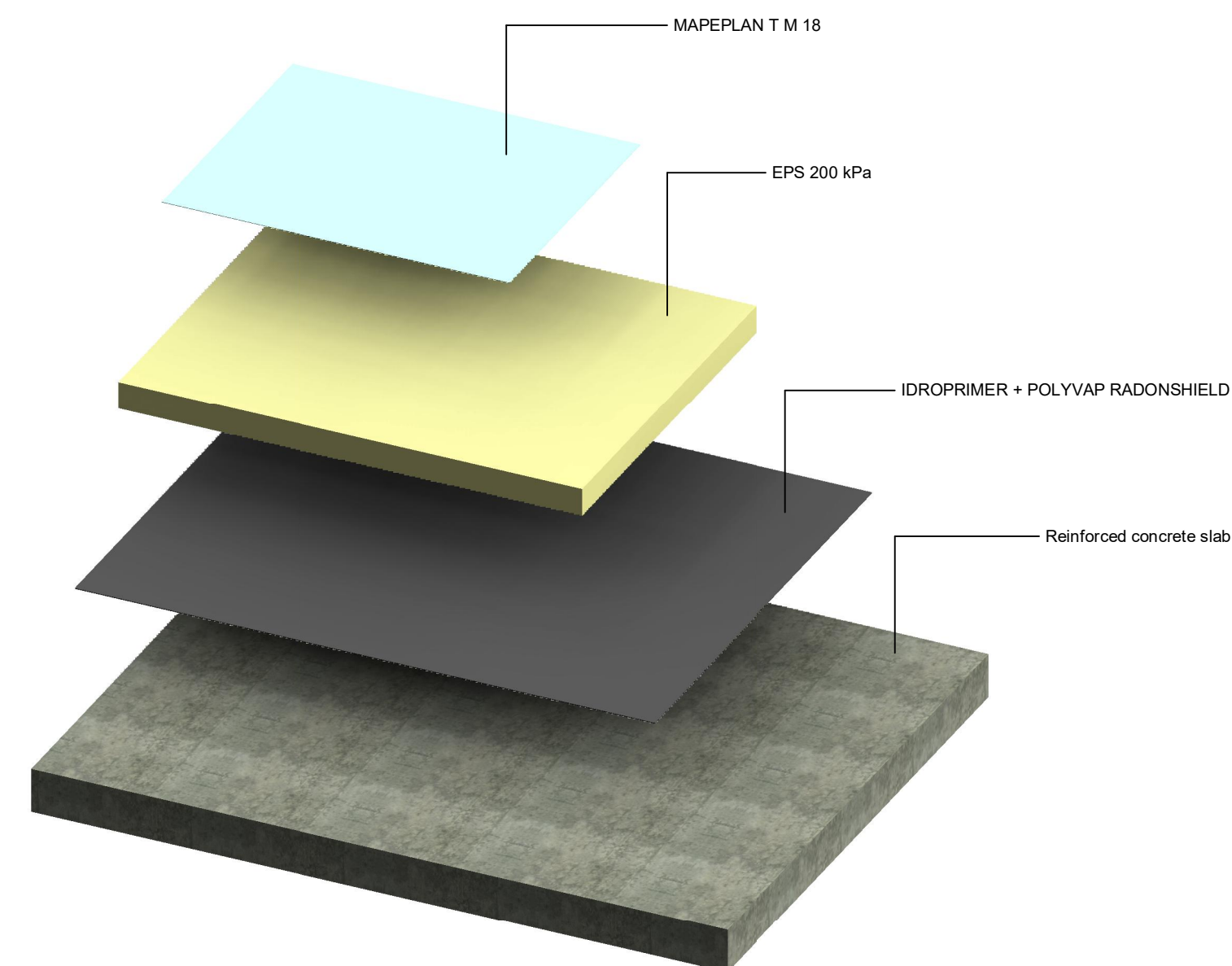


Section



Build-up composition



System TM1.2 Exposed roof with TPO/FPO synthetic waterproofing membrane mechanically fixed (insulated)					
NO	LAYER	MATERIAL	THICKNESS [mm]	POSSIBLE ALTERNATIVE	NOTE
1	Structure	Reinforced concrete slab		Concrete and masonry slab, precast concrete elements, corrugated metal sheet with or without concrete slab, wood	Substrate with adequate slope
2.1	Bituminous primer (*)	IDROPRIMER	0,1	POLYPRIMER HP 45 Pro	
2	Vapour barrier layer	POLYVAP RADONSHIELD 3 mm	3	POLYVAP SA 2 mm PLANA P 3 mm POLYVAP FIX AL 3,5 mm	
3	Thermal insulation layer	EPS 200 kPa according to EN 13163	30 40 50 60 80 100 120 140 160 180 200	EPS 150 kPa according to EN 13163; PUR/PIR according to EN 13165; Mineral wool according to EN 13162	Minimum values for mineral wool: - ≥ 70 kPa (EN 826) - ≥ 600 N (EN 12430)
3.1	Mechanical fixing of insulation layer	Mechanical fastening system			
4	Waterproofing membrane	MAPEPLAN T M	1,5 1,8 2,0	MAPEPLAN T M B _{ROOF} (t1) MAPEPLAN T M B _{ROOF} (t2-t3)	For B _{ROOF} waterproofing membrane check available build-up and certified thicknesses
4.1	Mechanical fixing of waterproofing membrane	Mechanical fastening system			

(*) Apply the product according to the thickness specified in the table. In the layout designed using Autodesk Revit software, the same product has been integrated into the next layer because the minimum representable thickness is 0.8 mm.

For information on the characteristics and how to use the aforementioned products, please refer to the latest version of the relative Technical Data Sheets which are available on our website www.polyglass.com.

System TM1.2

Exposed roof with TPO/FPO synthetic waterproofing membrane mechanically fixed (insulated)

Please note that it is the user's responsibility to verify the accuracy of the values supplied by Revit for composite packages and, in all cases, Polyglass only guarantees the accuracy of the data and figures for materials/products manufactured by Polyglass.



Adds value!

POLYGLASS SPA
Registered Office: Viale Jenner, 4 - 20159 MILANO
Head Office: Via dell'Artigianato, 34 - 31047 Ponte di Piave (TV) - Italy
Tel. +39 04227547 - Fax +39 0422854118 - www.polyglass.com - info@polyglass.it